

# **Supplementary Materials for Style Unlearning in Diffusion Models**

We organize the supplemental materials as follows. Our code is in the SUDM file and the brief summary of the paper is in the html. In section 1, we provide the results by SUDM. In section 2, we present the data pair.

# 1 Visualization results Of SUDM

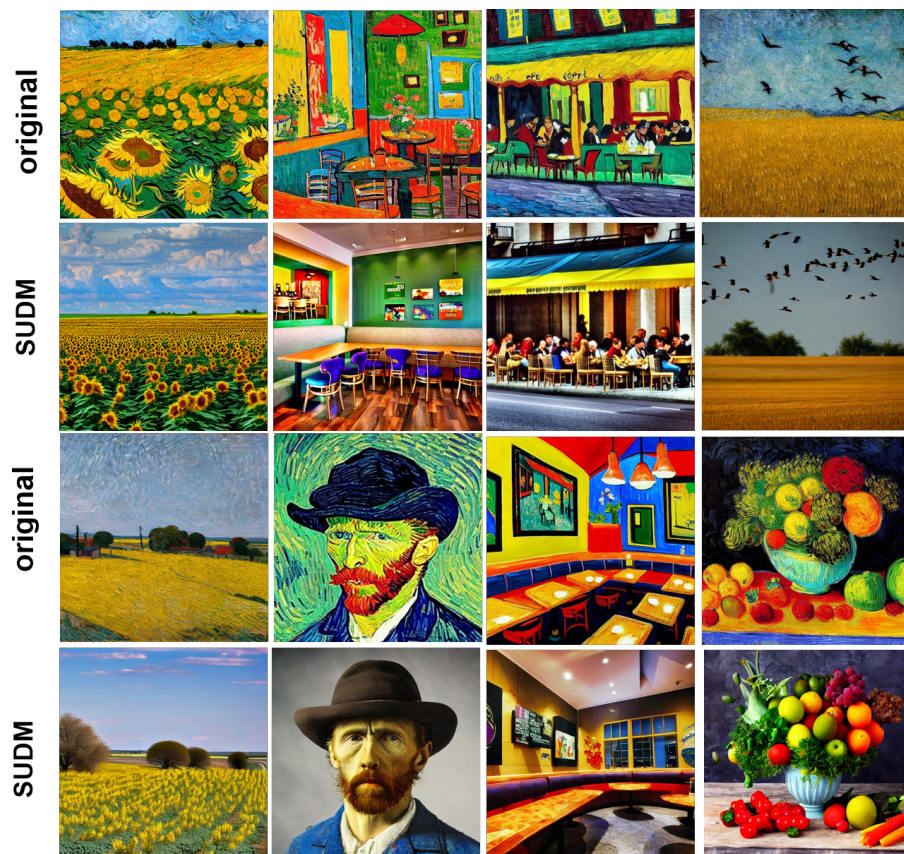


Figure 1: Visualization of unlearning Van Gogh style by SUDM

In fig.1, we present the results by SUDM, as can be seen, SUDM successfully unlearns the style while maintains the content of the image

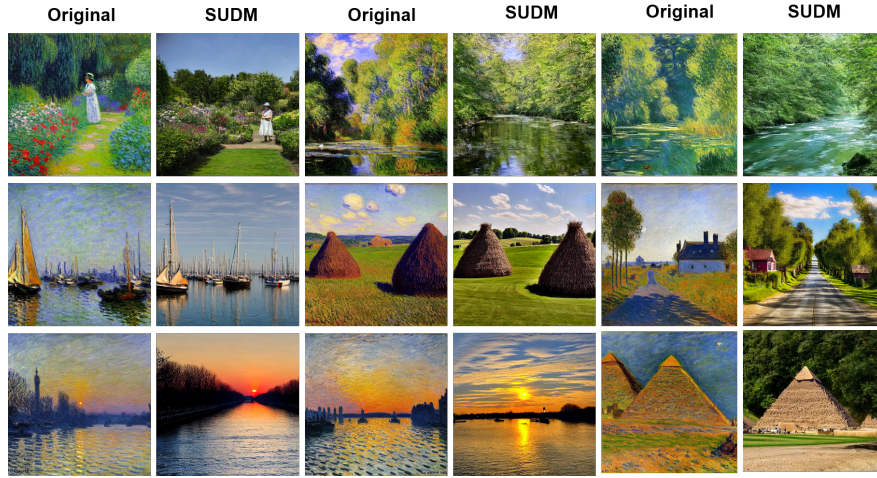


Figure 2: Visualization of unlearning Monet style by SUDM

In fig.2, SUDM can erase the monet style while maintain the content of the image.

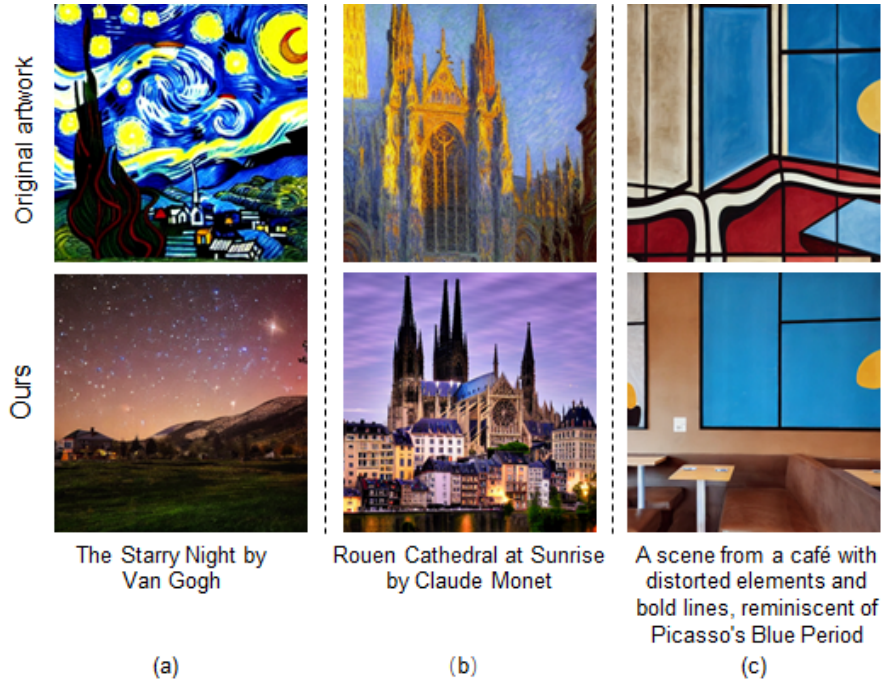


Figure 3: Visualization of unlearning by SUDM

Fig3 shows the results of unlearning Van Gogh, Monet, Picasso by SUDM respectively.

## 2 Data pair

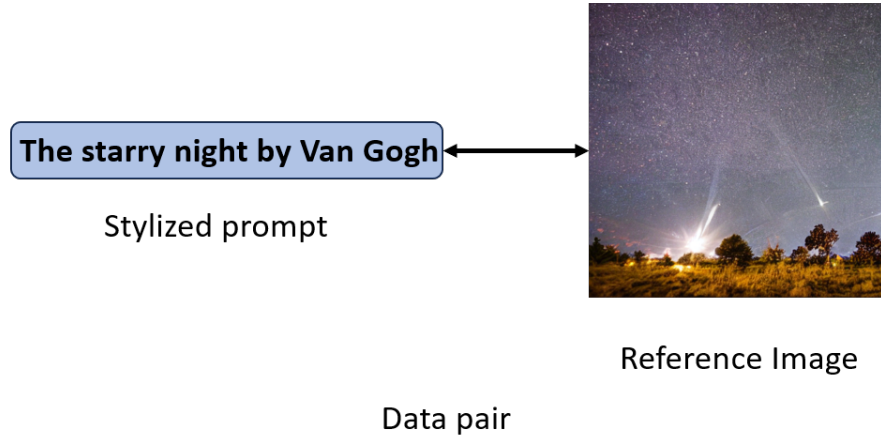


Figure 4: The reference image and stylized prompt

To unlearn the style , we construct a dataset, the dataset contains data pairs. Each data pair contains a stylized prompt (e.g. the starry night by van gogh) and a reference image where shares the same content with the stylized prompt but in a different style such as photorealism, as depicted in 4.